

WELCOME TO OUR COMMUNITY CAFÉ



DRINKS MENU



HOT DRINKS

Pot of Tea for one	£1.90
Speciality Tea	£2.65
Cafetière (small / large)	£4.35 / £5.40
Americano or White Coffee	£3.40
Cappuccino / Latté / Mocha / Latté Macchiato	£3.90
Flat White	£3.20
Espresso / Double Espresso	£2.65 / £3.25
Cortardo	£2.80
Hot Chocolate	£3.40
Luxury Hot Chocolate	£4.40

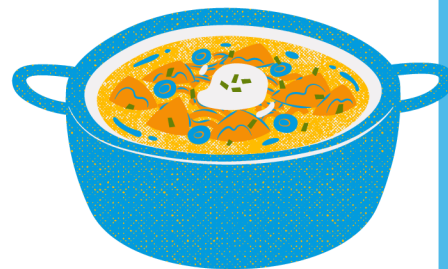
Add a
shot of
syrup for
just £1!

COLD DRINKS

Canned Drinks	£1.80
Orange or Apple Juice (small / large)	£1.70 / £2.70
Bottled Still or Sparkling Water	£1.95
Fruit Squash (small / large)	£0.85 / £1.50
Milkshake (small / large)	£1.50 / £2.65
Luxury Milkshake	£3.55

LUNCH MENU

See our **Specials Board** for our daily home-cooked lunches & desserts!



SANDWICHES & PANINIS

SANDWICH PLATTER – with salad & crisps

Ham, Tuna or Cheese **£7.60**

Prawn Marie Rose or Chicken Mayonnaise **£8.10**

PANINI PLATTER – with coleslaw & crisps

Cheese & Ham or Tuna Melt **£8.25**

Bacon, Brie & Red Onion Chutney or **£8.80**

Roasted Veg with Pesto & Cheddar

JACKET POTATOES & OMELETTES

Jacket Potato or Omelette with mixed salad

Tuna, Ham, Cheese, Beans, Ratatouille, **£9.95**

Coleslaw or Mushrooms

Chilli, Veggie Chilli, Prawn or Chicken Mayo **£10.95**

SALADS

Lettuce, Cucumber, Tomato & Coleslaw with:

Cheese / Prawn Marie Rose **£9.35 / £10.95**

SNACKS – Weekdays only

Solo Margarita Pizza **£4.00**

Beef Burger, Hash Browns & mixed salad **£8.25**

Cheeseburger, Hash Browns & mixed salad **£8.75**